

Technical parameters

MCC02 MCC03

Model	MCC02-7009	MCC02-9009	MCC02-12009	MCC03-2516S	MCC03-3016S
Pick-up Area	/	/	/	1.25m	2.5m
Effective Working Area	7000x900mm	9000x900mm	12000x900mm	2500x1600mm	3000x1600mm
Overall Size	7685x1828x1350mm	9685x1828x1350mm	9985x1828x1350mm	5030x2585x1350	6280x2585x1350
Pump Power	9kw	9kw	9kw	9kw	9kw
Standard Tools	Driving Rotary Tool, Cursor, Cylinder Pen Holder, Projection System			Cylinder Pen Holder, Driving Rotary Tool, Cursor	
Transmission System	High-end servo motor drive, Linear guide, high precision rack and pinion			High-end servo motor drive, Linear guide	
Cutting Materials	PVC, TPU, PU, Fiber glass tape, woven fabric, knitted fabric, etc.				
Optional Tools	High-speed oscillating tool, I-notch tool, V-notch tool, Punching tool				
Repeat Precision	≤ 0.1mm				
Cutting Thickness	≤ 10mm				
Max. Cutting Speed	1800mm/s				
Fixing Method	Vacuum System				
System	HP-GL/PLT/DXF Format Compatible				
Interface	Ethernet Port				
Voltage	220V/380V/50-60HZ				
Power	AC 380V±38V				
Working Environment	-10°C ~45°C				

Rate of return comparison

100 pieces of plain suits for example

Item	No. of people	Time	Cost (200RMB/hour)	Consumables	Welfare	Total
Manual labor	2 人	33.33h	6666*2=13332	0	480	RMB 13812.00
RUK Cutting Machine	2 人	5h	1000*2=2000	50	120	RMB 2170.00
Saving						RMB 11642.00

Clients

Our cooperative customers



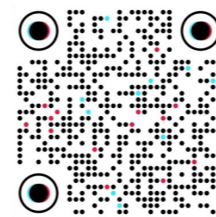
After-sale Service

- 7/24 Online Service All Time Zone Friendly
- Technical Engineer On-site Service
- 3-Year Warranty For Core Components
- 1 Year Warranty For The Whole Machine
- Lifelong Time Free Software Upgrade
- Real-time Remote Video Training



Ningbo Ruking Electrical Technology Co.,Ltd

Address: 10F, Bulijie Building, No.579, Rili Middle Road, Yinzhou District, Ningbo  
 Assembly plant:No.86-2, Dongfeng Road, Fenghua District, Ningbo  
 Production base: Building 12, CITIC Cloud Valley Industrial Park, No. 222 Juchao Road, Jiangkou Street, Fenghua District, Ningbo  
 Website: www.ruk-tech.com



TIKTOK



facebook

# Suit Shirt Customization

High-end clothing customization  
 intelligent cutting complete solution

Double Efficiency

Save 100%-120% of typesetting time compared to manual

Save 3%-5% on some fabrics

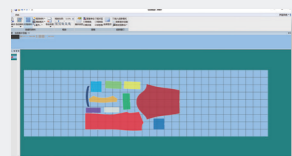


# High-end Clothing Customization

**Intelligent Cutting**

Complete Solutions

## Software function introduction



Automatic Matching Stripe Matching  
Plaid Typesetting Software  
Save 100%-120% of typesetting time over manual  
Save 3%-5% on some fabrics



One-click code change  
Personalized and customized software to meet special production needs, easy to operate and increase production efficiency

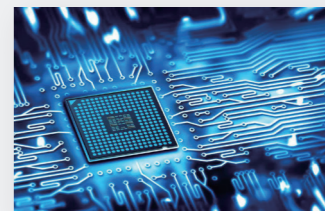


International Brand Projector  
Select international brand projectors to ensure higher accuracy and stability of contour recognition efficiency

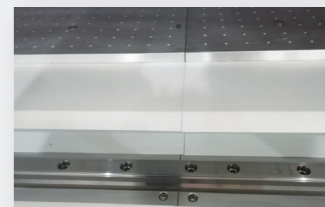
## Process Flow



**RUK Quality**



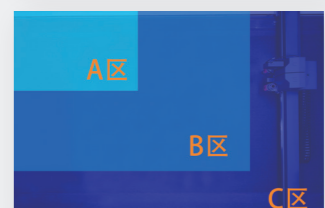
High Performance IC Controller  
Independent design, mastering core technology



Modular table structure design  
Easy to transport, handling and installation; high strength gantry milling one-piece frame structure, with high strength weather resistance, durable



High precision multi-tool head  
Including v-notch tool, l-notch tool and punching tool, etc. to meet the different needs of customers in the cutting process



Partitioned air suction  
Adopt partitioned air suction and tracking air suction to achieve multi-layer cutting Multi-point adjustable platform, durable and non-deforming



Visual digital fine-tuning and preset storage  
Designed for cutting various fabrics with high speed and smooth and neat cutting edge. Visual digital fine-tuning and preset storage of knife depth and knife pressure, no need to adjust manually by experience

## Double Efficiency

Customizable extra-long cutting table tops for individual needs  
Customized suits and shirts with full set of samples cut at once

MCC03-2516  
Shirt customization Preferre

